

Re-20x Process



June 10, 2022

Our Strategy



Here for one thing only

1. Net-Zero Battery Metals

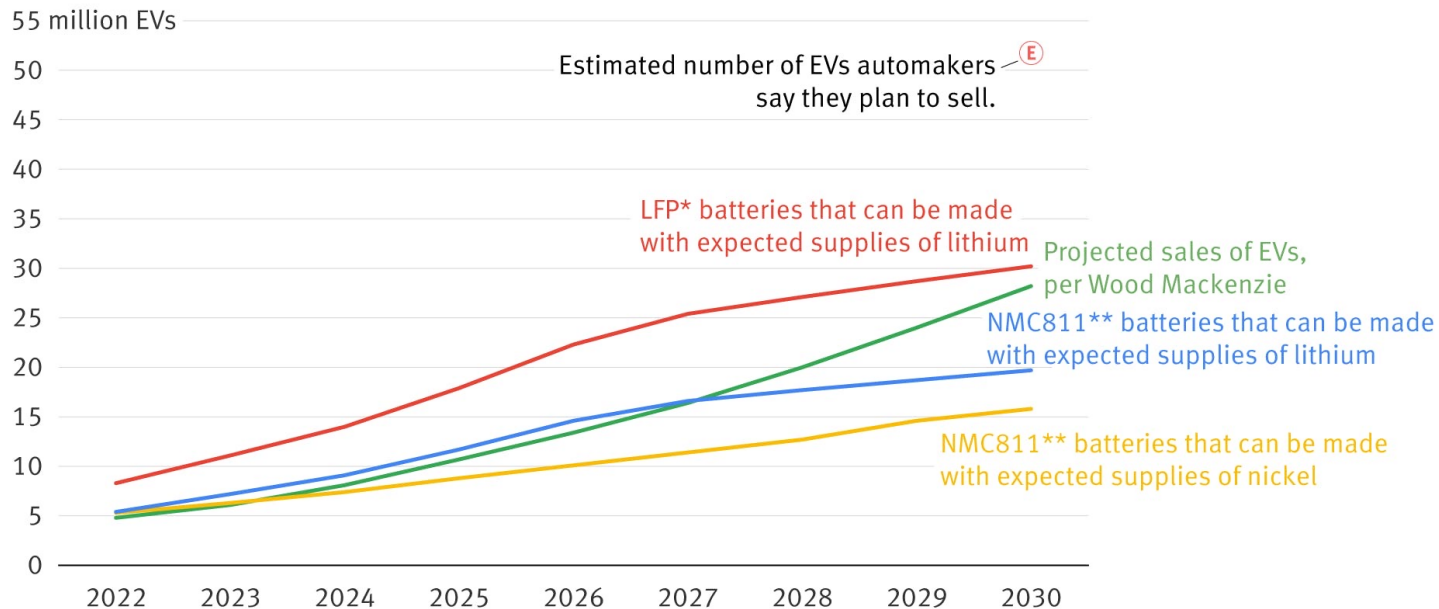
The Re-20x Process treats complex ores and extracts valuable materials, while recovering all byproducts. A series of metallurgical tests conducted at SGS Lakefield have proven the application toward recycled batteries, tailings material, and primary ore concentrates.

02

The Problem

Out of Power?

A shortage of raw materials means there may not be batteries available for all the EVs automakers say they plan to sell.



*60 kWh LFP batteries

**90 kWh NMC811 batteries

Sources: Wood Mackenzie, BloombergNEF, BATPaC

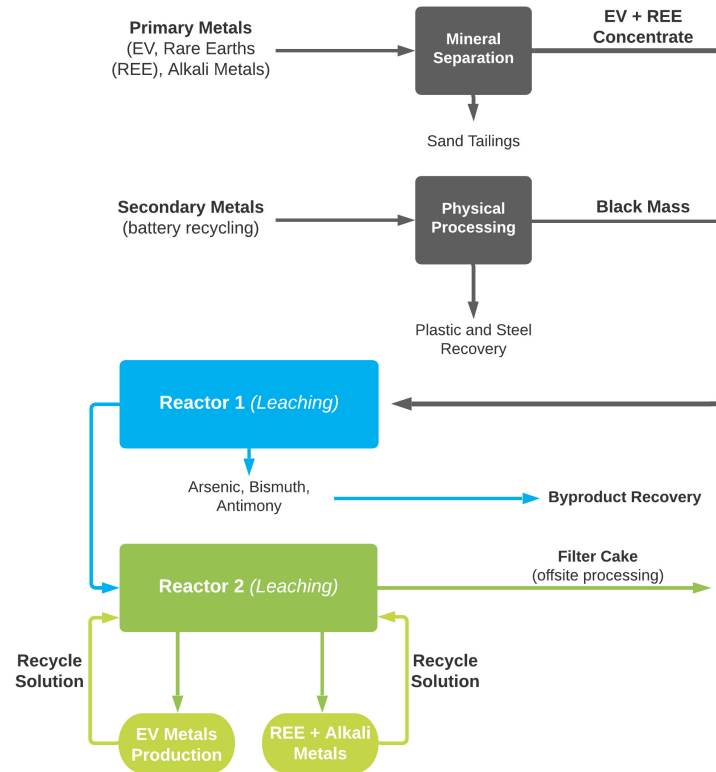
Our Vision



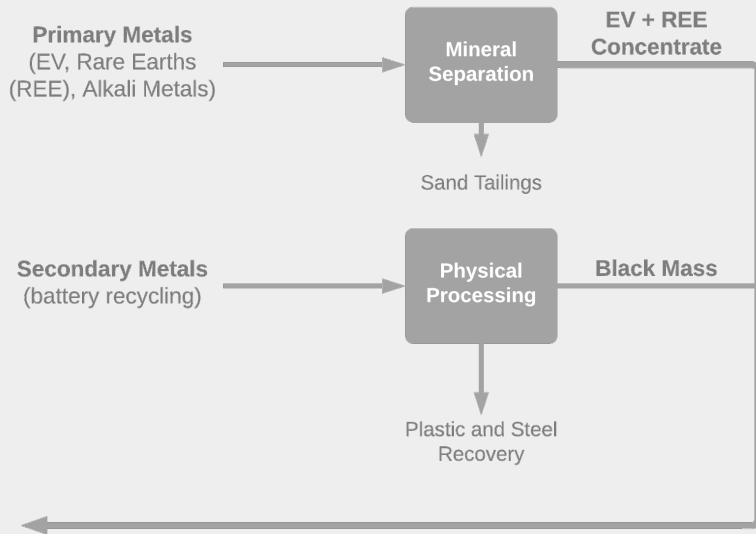
Frank Basa
Founder & CEO

Critical Metals power the Future

Demand for renewable energy continues to shape a global transition. Newly discovered deposits are years away from production. Currently the opportunity is unlocking value in accessible complex ores, materials for recycling, and tailings left behind at past operations.



04



Feed Material

Primary Metals

The majority of battery materials need to be sourced from mineral deposits in the near term. For any recycling process to be viable the inclusion of ore concentrates will be necessary at first.

Secondary Metals

Batteries currently exist in stockpiles in various states of disassembly and processing. The challenge of our era will be harmonizing the feeds in a way that they can be treated economically and sustainably.

05

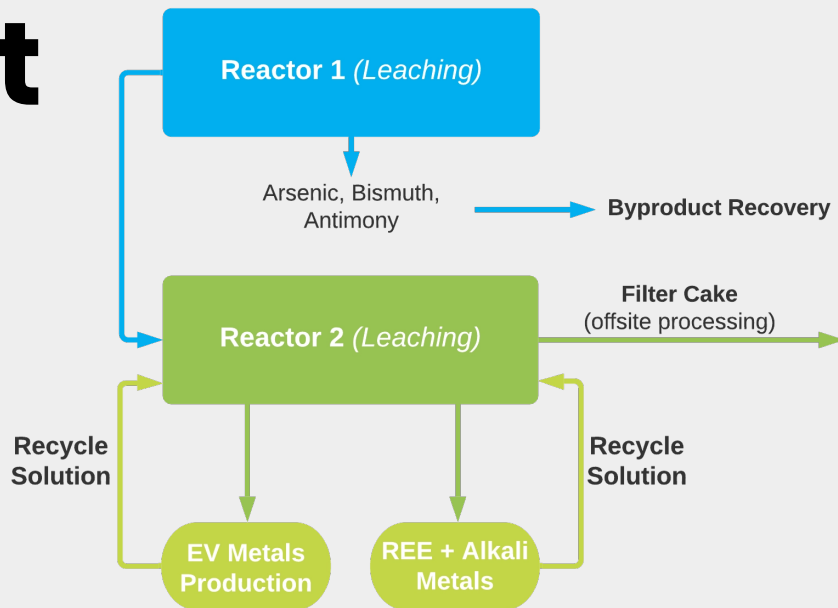
Output

Battery Metals

Manufacturers have unique specifications that our process can achieve by adjusting circuit variables.

Rare Earth Elements

Tests have demonstrated that process can be adapted to recover and produce Rare Earth products.



Byproduct Recovery

Sustainable recycling requires full recovery of all elements. Fortunately most of these can be returned to industrial application.

Our Strategy

Re-2Ox Process

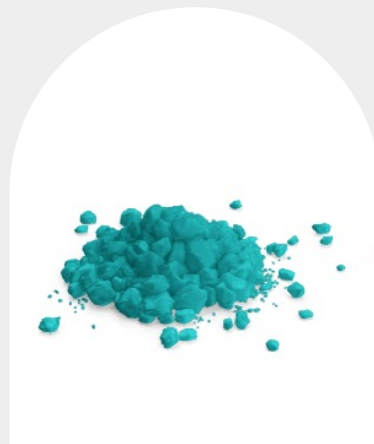
— Our Products



Cobalt
Sulfate



Copper
Sulfate

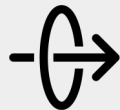


Nickel
Sulfate



Rubidium
Chloride

Outcome Independent



Adjustable: We can take feed from various sources, including tailings, black mass, and ore concentrates.



Modular: We can work with other processes, including pyrometallurgical, and mechanical separation.



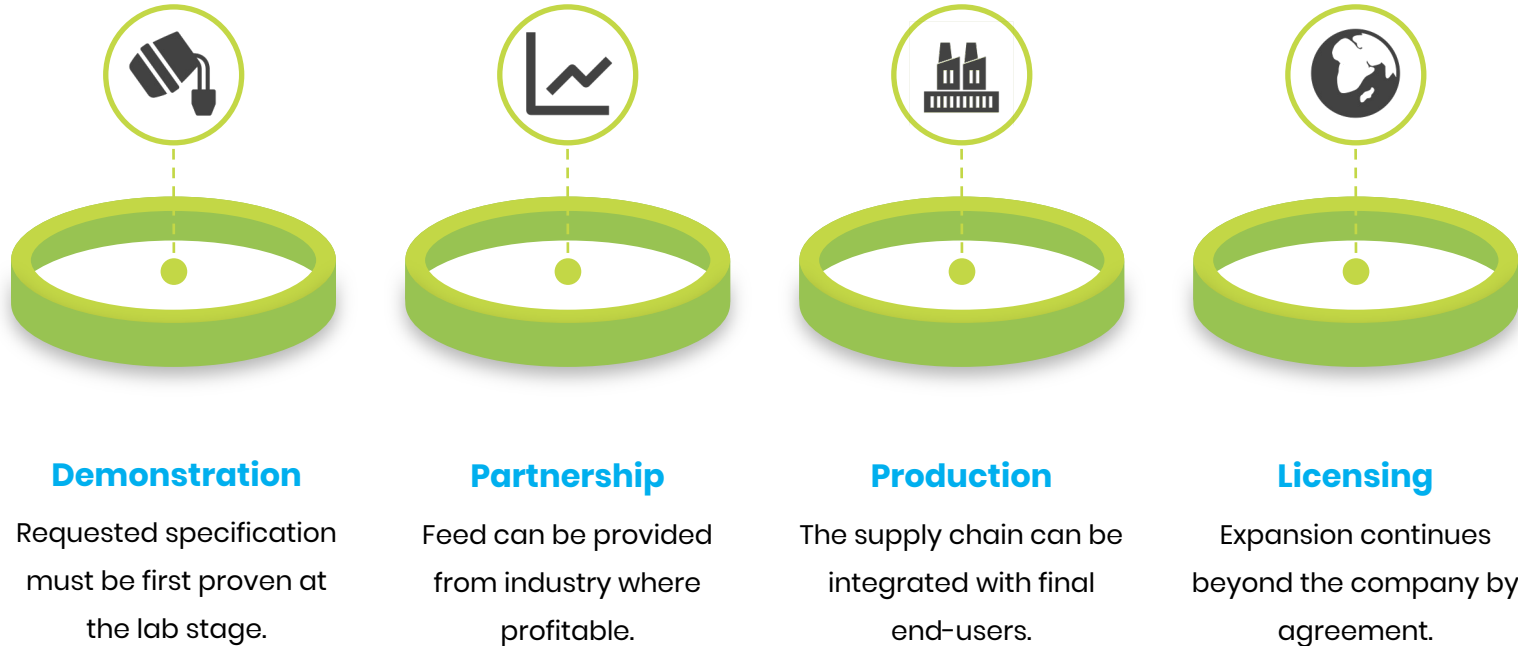
Adaptable: We can modify the process to fit the requirement of what the clients want either as an input or an output.



Viable: Our process is customizable and hydrometallurgical and does not depend on public subsidy.

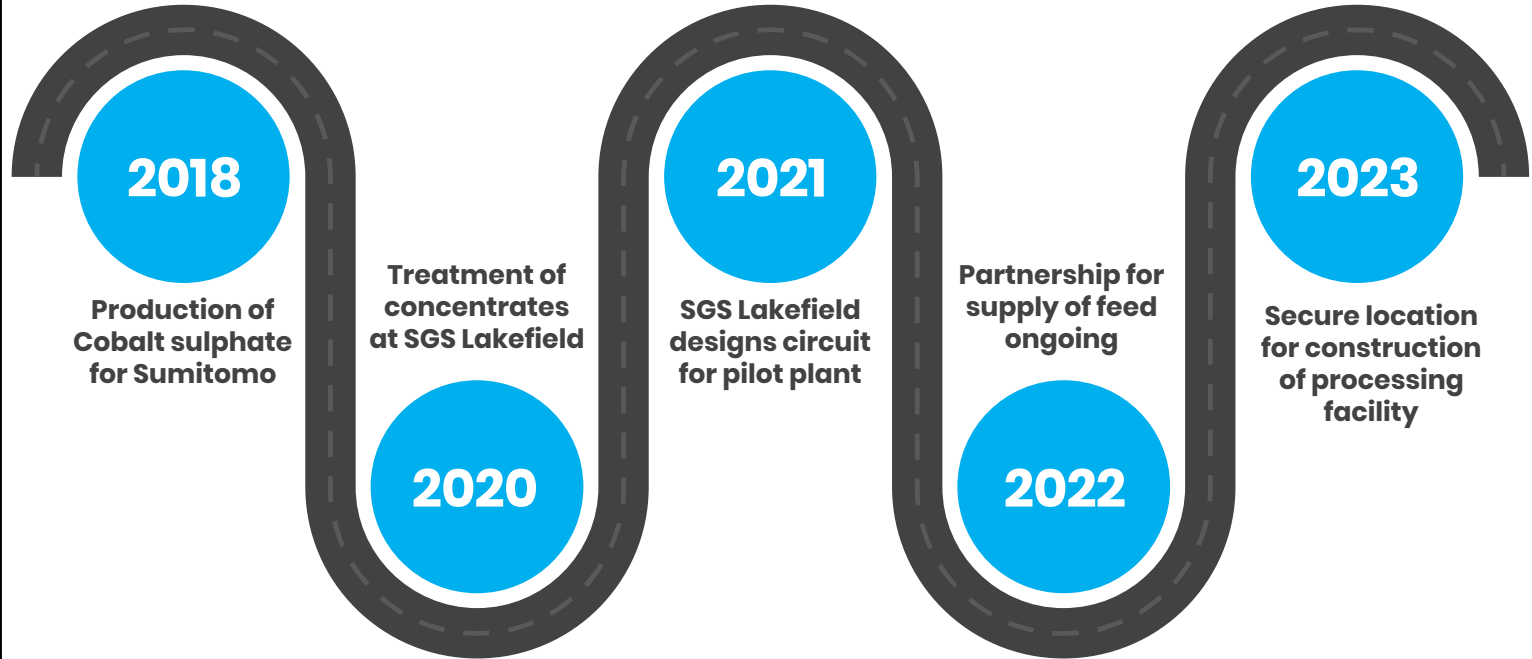


Planning



Path to Market

09



Contact Us

An Industry Background

The Re-20x Process is a proprietary hydrometallurgical process. The founding team decided against patenting the process and instead maintain a trade secret. The next step will include tolling and processing agreements and we invite interested parties to reach out.



Wayne Cheveldayoff
Corporate Communications



416-710-2410



waynecheveldayoff@gmail.com